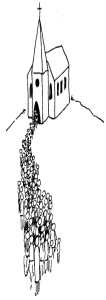


MASS INTENTIONS NEXT WEEK



Ashford Mon Jan 30rd 9 am Prayer Service
 Ashford Tues Jan 31st 9:00 am Prayer Service
 Ashford Wed. Feb 1st 9:00 am. Prayer Service
 Ashford Thurs Feb 2nd:00 am –Prayer Service
 Ashford Friday Feb 3rd 10:00 am Altar List of the Dead
 Ashford Saturday Feb 4th Vigil Mass Michael & Mary Sammon
 Glenealy Sunday Feb 5th 9:30
 Ashford Sunday Feb 5th 11:00 Bill & Mary Shortall



Welcome to The Parish of Ashford & Glenealy

4th Sunday in Ordinary Time

TELLING IT AS IT IS



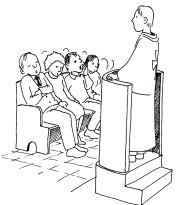
Lazy preachers use religious words. It's easier than getting down to the nitty-gritty but it doesn't help people to connect their faith with their lives. So whenever you hear a sermon that is peppered with words like salvation, ecclesial, redemption, Christological, justification, metanoia, eschatology, sanctifying grace or beatific vision, then you know that the preacher is using shorthand. Of course, there's nothing wrong with any of these words; they are theological

ways of expressing our faith and the work of God in our lives. But they remain on a cerebral level. They engage the mind but more often than not don't reach the heart. They are not geared to connecting faith with life in a way that most people readily understand.

When the Jewish religious teachers preached they appear to have fallen into the same trap. What they said was right, but it was stale. People found it hard to become enthusiastic when they heard them preach.

Then Jesus came along. People related to what he said because they could see that it had meaning for the way they were trying to live. It connected with their struggles, their fears and their hopes. When they described his teaching, people said that he taught "with authority". By this they did not mean that he took an official stance or that he talked down to people as if they were ignorant. It meant that they could see that his teaching was going to have a beneficial effect on their lives. It made sense and they could grasp its significance.

Authority meant that his words had clout. The word authority comes from a Latin word that at its root means to increase or grow. To speak with authority meant that what Jesus was saying to them would make them grow, cause them to develop, to fulfil their potential. Unlike the scribes who simply told people all the rules that they had to obey, Jesus' teaching was a liberating experience that spoke about the value and worth of the human person before God. It encouraged people, offered them hope, gave them confidence and made them want to be part of the message and to tell others about it. It was more than just words. And it still is today.



First Friday



Friday next Feb 3rd is First Friday. Mass will be celebrated for the Altar Lists of the Dead in Ashford at 10 am. The Eucharist will be brought to those confined to their homes as well..

A silent hour of Exposition of the Blessed Sacrament will be in place commencing after the 10 am Mass in Ashford. The rosary will be recited before the 10:00 a.m. mass in Ashford on that day.

NEXT CELEBRATIONS FOR THE FIRST HOLY COMMUNION CHILDREN

Will be on Sunday the 12th of February at the 9:30 a.m. mass in Glenealy and at the 11:00 a.m. mass in Ashford. We pray for God's blessing on the children, their parents and teachers in a special year for them.



love one another as I have loved you

VOLUNTEERS TO HELP TIDY TOWNS

Tidy Towns Ashford are keen to continue the work we have been doing over the last number of years and all your support and assistance (in what ever manner and fashion you can offer).

The next two Monthly Litter Picks are as follows:-

Saturday 18th of February 10am-12 noon
 Saturday 24th of March 10 am -12 noon

They meet at the school at 10 am and finish with coffee at 12 noon!
 Please pass the information along to family friends and neighbours to seek their assistance in this community endeavour!



"Parish Newsletter sponsored by McDonnell Properties Ashford"

LAST WEEKEND'S COLLECTION

Offertory: € 790
 Share € 582
 Planned Giving: € 710
 Maint. & Devel € 155

Parish Information

Fr. Kevin Rowan Adm.

Telephone: 0404 40540/0872242230

revkev@eircom.net

Sacristan:

Ashford –Brendan Devine –brendandevine@eircom.net -0879705916

Baptisms: Ashford 1st Sunday each month after 11:00 am Mass. 3 Weeks notice required. Glenealy 3rd Saturday each month at 12:00 . 3 weeks notice required.

Marriages: Three months notice required by Church and the State . N.B. New Civil law Regulations require that all couples present themselves to the priest in the Church before a marriage date can be booked into the Church Diary.

PLANNED GIVING ENVELOPES

Plan giving envelopes are available in the Churches for those who wish to use them. The Planned Giving envelope and the Maintenance envelope are the only money that remains 100% in the parish and are used to cover the costs for our running Churches. To those that already contribute we say a big thank you to the majority who do not we ask you to Please take either a weekly or monthly set of envelopes and make your donation however big or small to your parish.

Your support to the parish is very much appreciated!!

Coffee Morning in aid of St Vincent De Paul

A special coffee morning in support of SVP will be taking place in the Hub (between McDonnell Properties and Hanley Farm Machinery) organised by Ashford Gift and Book Shop on Monday 30th January from 9.30a.m. to 12.30p.m.

All welcome.



IRISH WHEELCHAIR GATE COLLECTION

The IWA will be holding a church gate collection at both our churches over the weekend of February 11/12.

Please assist them as generously as you can. Should you wish to assist as a volunteer please contact Olive at 086 85 36 818

Many thanks!!



PASTORAL PROGRAMME TO PREPARE FOR THE 50TH INTERNATIONAL EUCHARISTIC CONGRESS (IEC2012)



In preparation for the 50th International Eucharistic Congress 2012, a workshop will be offered for the Dublin Diocese. The Workshop for Eucharistic Adoration with Lectio Divina and Catechesis will present the Leader's Guide for Eucharistic Adoration with Lectio Divina and Catechesis and will include booklets and guides for Parishes and schools to assist adult and children's Eucharistic Adoration. One of these workshops on Saturday 25

February 2012 at St. Mary & St. Peter's Parish, Arus Lorcaín, Castle Park, Arklow, Co. Wicklow, in the Parish Pastoral Centre from 11am to 2pm.

Anyone who is interested in Eucharistic Adoration is welcome. Coffee/tea will be available at both locations. Please bring a packed lunch.

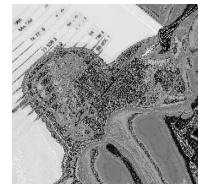
There is no charge for the workshop, however a voluntary collection will be made on the day.

Contact: Fr. Kevin Bartley Phone Nos.: Home: 2697754. Mobile: 0872755413 Email:

kevingbartley@eircom.net

TAX REFUND TO ELIGIBLE CHARITIES 2011

During this past week we sent out letters to all who qualify for the Tax Refund scheme, to qualify you have to donate a minimum of €250 to the parish in any given tax year. This year 92 parishioners are according to our records eligible to participate in the scheme which is an important source of revenue to the parish. Last year the parish received €6.200 from Revenue in relation to this scheme. We ask those who receive notification to please fill in the required forms and return them to Fr. Kevin as soon as possible so that the claims can be processed. Many thanks for your help in this matter and your continued support of our parish.



Lisne Centre Delgany

The centre continues to offer a wide range of very worthwhile workshops. Over the next weeks the following are just some: You may get full details on their website www.Luisine.ie

GENEALOGY for Beginners: Mondays from Jan 30th, 8:00 – 9:30pm

Feb 4th Silent Prayer Practice each first Sat. 11:00 – 1:00pm

Art Therapy 1:30 – 5:30pm

Feb 6th Shiatsu* 10:45-12noon

Feb 7th Reflexology* 10:45-12 noon

Feb 11th Divine Food with Dorene P10 10:30 – 3:00pm

Feb 21st Lectio Divina P6 10:45 – 12noon